

# **STORM SURGE GUIDANCE BASED ON 0300UTC OF 2<sup>nd</sup> DECEMBER, 2023**

## **STORM SURGE GUIDANCE FOR INDIA:**

Storm surge of about 1-1.5 meter above astronomical tide likely to inundate south Coastal Andhra Pradesh districts at the time of landfall.

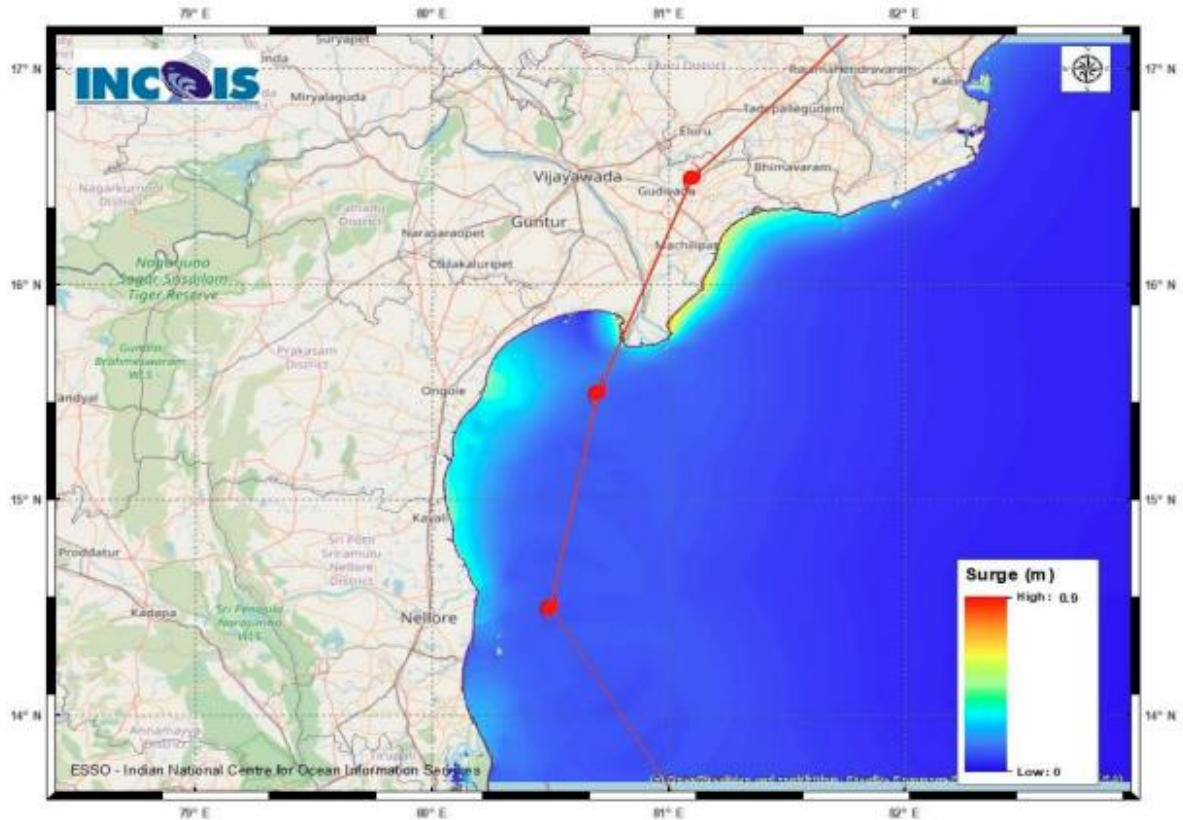


Figure: Storm Surge Map

### **STORM SURGE HEIGHT INFORMATION:**

\* The below listed surge heights are over and above astronomical tide.

MANDAL/TALUK	DISTRICT	STATE/UNION TERRITORY	NEAREST PLACE OF HABITATION	STORM SURGE (m) *	EXPECTED INUNDATION EXTENT (km)
Avanigadda	Krishna	Andhra Pradesh	Ramakrishnapuram	0.3-0.8	Upto 0.10
Machilipatnam	Krishna	Andhra Pradesh	Chinagollapalem	0.4-0.9	Upto 0.49
Repalle	Guntur	Andhra Pradesh		0.2-0.5	Upto 0.34